

TS65-40 / TS65-48 Technical Specification

EDGE® reserve the right to alter any details contained without notice. COPYRIGHT© 2011



GENERAL TECHNICAL DATA

OPERATION MODE

- Machine Width..... 2294mm / 7ft 6ins
- Length. 19648 / 65ft
- Maximum Discharge Height:..... 9534mm / 31ft 7ins
- Working Angle: 0-28 degrees

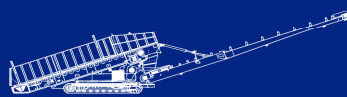
TRANSPORT MODE

- Transport Width..... 2294mm / 7ft 6ins
- Transport Length.....10535mm / 34ft 7ins
- Transport Height.....2311mm / 7ft 7ins

WEIGHTS

- Standard Machine.....10800 kgs / 11.9 US Tons
- Dual Power Machine.....12760 kgs / 14 US Tons

TS65 Page 1/4





MAIN CONVEYOR

- Belt Width..... 1000mm / 40 ins
- Belt Width..... 1220mm / 48 ins
- Belt Length..... 19.812m / 65ft
- Belt Type..... EP 500 3PLY / Optional
- Drum Centres:.....19.1m
- Drive drum:295
- Tail drum:274

POWERUNIT

- EngineDiesel Hydraulic
- Engine Type.....CAT 2.2NA / Developing 38kw / 50bhp @ 2200 Rpm
- Fuel ConsumptionFuel Consumption 5.2-6.2ltr/hr
- Fuel tank volume95 Litres

HYDRAULICS:

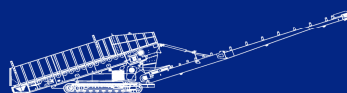
- Standard machine hydraulic motor..... Danfoss OMOV630 / 1 off
- Twin drive machine hydraulic motors.....Danfoss OMOV630 / 2 off

TRACK DATA:

- Track length.....13m
- Track Shoe Width.....400
- Tractive Effort.....14300 daN
- Gearbox Ratio.....134:1
- Hydraulic Motor.....Rexroth 32cc / Rev
- Approx Speed.....1.6 km /hr (0.95 Mph)

ADVANTAGES:

- Easily Tracked in and out of a 40 ft container minimising transport costs
- Can be used for a variety of applications including: Crushed Aggregate, Top Soil, Bark, Coal, Sand and Fines
- Has a range of Input and Output Heights and can be used in conjunction with any crusher or screener
- Greater operating efficiency
- Stockpile capacity increased
- Easy to move around site
- Operating fuel costs reduced up to 75%-shovel operator not required to continuously move material from under conveyor.



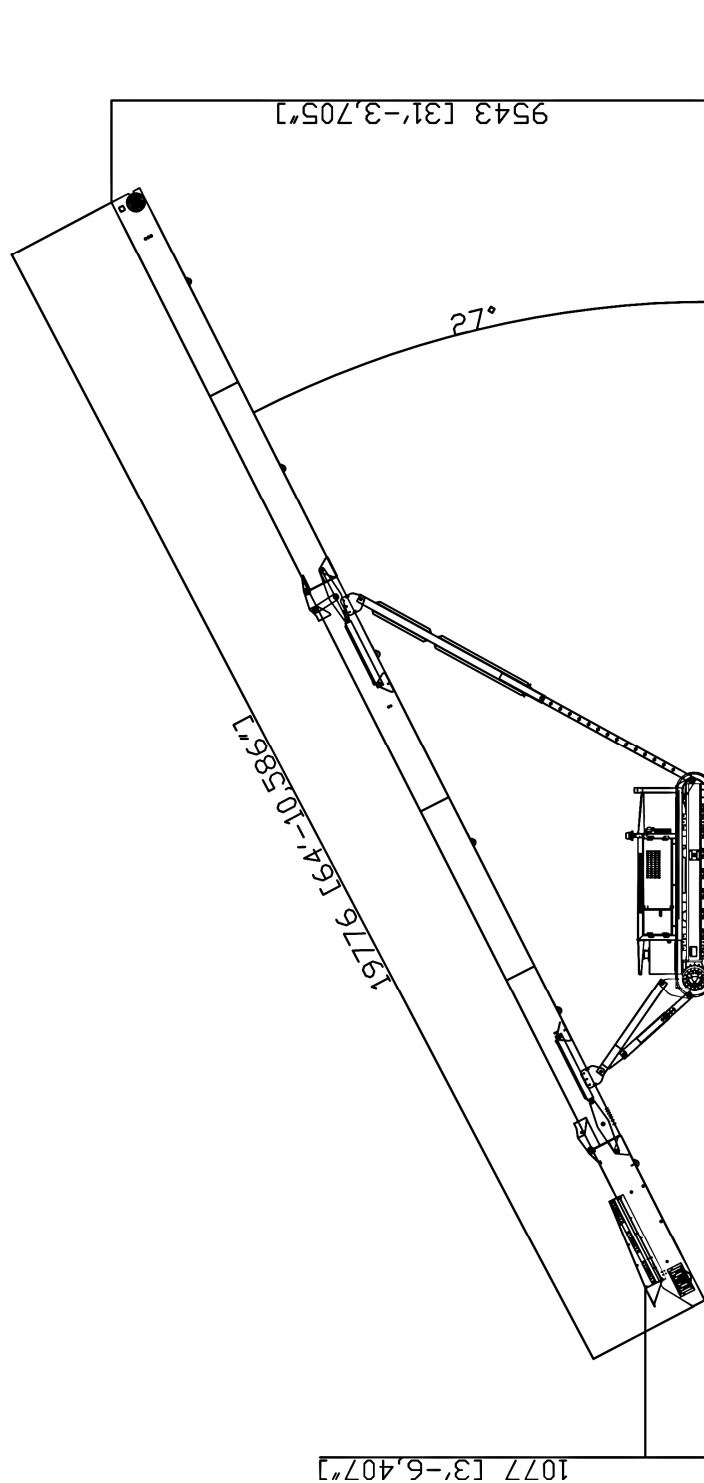
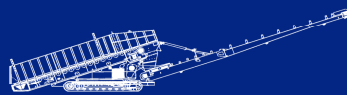


Fig. 1. TS65 Stockpile Heights - Maximum



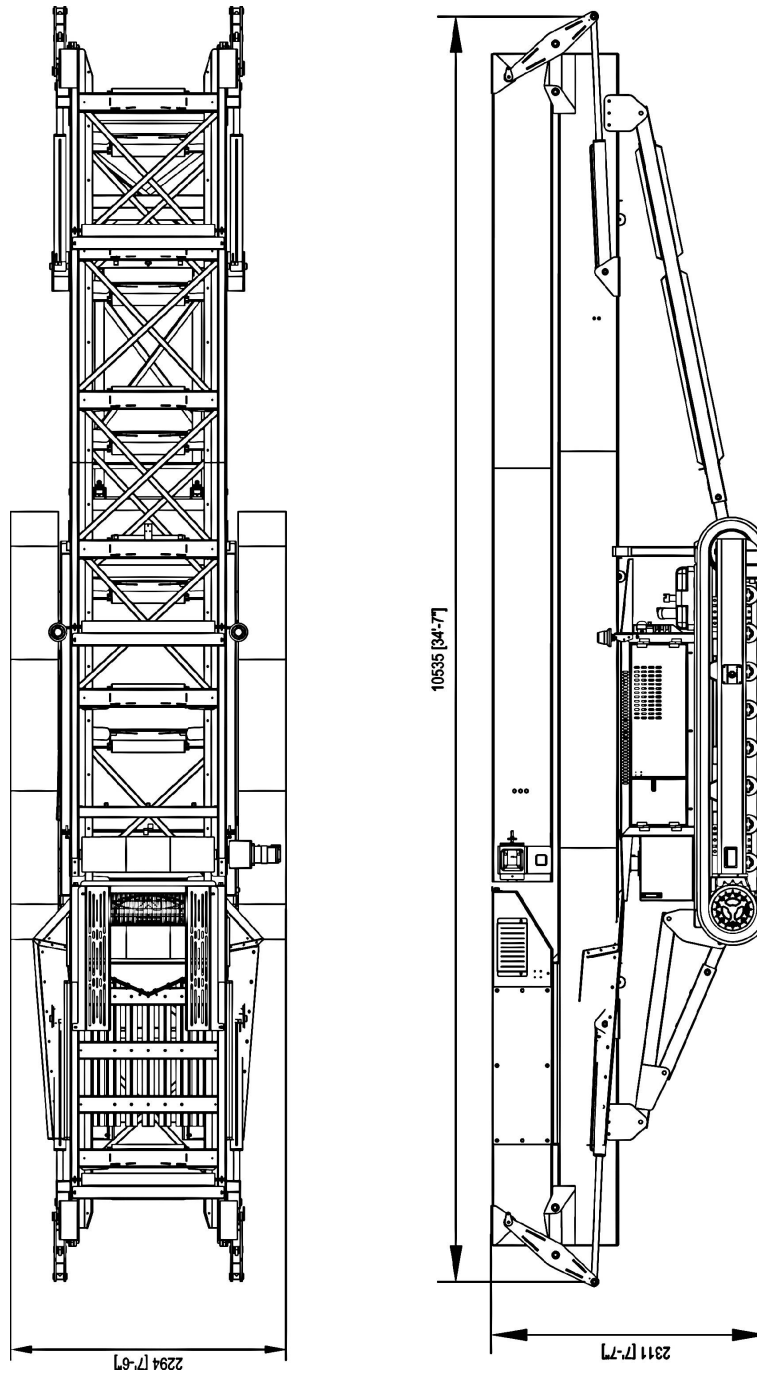


Fig. 2. TS65 Transit Dimensions